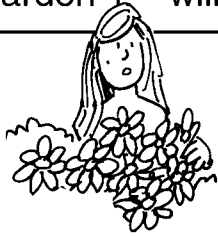


The serpent said, "Did God really say,
'You must not eat from any tree in the garden?'"
What did the woman tell the serpent?

Working left to right, first write all of the 1's.
Then write all the 2's. Continue with the 3's, then the 4's.

1 We	2 garden	3 that	4 you	1 may	2 You
3 is	4 must	1 eat	2 must	3 in	4 not
1 fruit	2 not	3 the	4 touch	1 from	2 eat
3 middle	4 it	1 the	2 fruit	3 of	4 or
1 trees	2 from	3 the	4 you	1 in	2 the
3 garden	4 will	1 the	2 tree	3 and	4 die



The woman said,

" _____ "

_____ ,

but God did say, ' _____

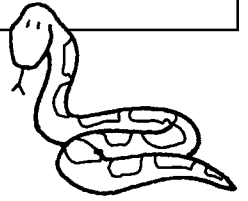
_____ ,

_____ , _____ . "

But the serpent lied to the woman.
The serpent said, "You will not surely die."

Read what happened next, then find the underlined words below.

They are .



When the woman saw that the fruit of
the tree was good for food and pleasing
to the eye, and also desirable for
gaining wisdom, she took some and ate it.

L	L	K	C	H	J	D	C	N	D	T	K	L	E	Y	E	R	T
F	B	H	D	Y	B	W	A	K	V	K	M	Q	U	O	I	N	S
M	E	L	I	J	Z	I	B	S	H	C	M	P	C	B	H	D	H
G	W	D	J	Z	S	E	R	J	D	I	G	A	N	F	O	G	U
N	K	R	O	Q	Q	H	D	A	M	E	H	L	E	J	G	K	F
H	N	Y	P	O	N	B	P	A	U	W	I	B	F	K	J	A	L
O	K	M	I	O	F	V	Z	O	N	B	I	M	P	I	P	D	F
L	B	A	G	R	A	O	D	I	N	V	T	S	E	C	C	W	B
C	K	R	T	D	I	L	F	W	L	M	C	L	D	K	V	H	V
P	O	E	B	Q	S	C	P	O	L	W	B	D	K	O	C	E	K
G	J	P	F	R	K	H	S	M	I	H	C	O	U	J	M	Y	B
Q	I	D	D	C	W	A	Y	A	G	K	E	P	E	A	O	Z	B
S	H	Q	E	A	D	L	U	N	T	C	J	L	Q	N	Z	K	A
R	R	E	S	G	Z	V	G	S	J	R	G	H	I	A	M	D	B
G	A	U	I	N	P	B	P	F	N	G	H	Q	S	T	A	A	H
S	Z	Y	R	K	H	F	A	O	J	G	T	R	H	V	H	Y	Z
F	M	E	A	C	Q	L	K	F	G	C	A	I	A	J	W	C	G
K	L	J	B	V	W	K	Y	A	E	M	I	Z	U	B	V	K	N
T	W	V	L	V	D	A	I	D	H	G	K	H	G	R	D	E	I
H	A	E	E	C	F	W	C	W	K	P	F	L	T	F	F	D	S
B	A	L	Q	Z	Y	A	L	G	C	S	B	Q	C	C	C	U	A
F	B	E	I	B	L	V	J	R	J	I	V	A	R	G	S	B	E
S	L	R	Q	K	E	P	O	T	N	K	E	A	H	T	F	E	L
W	D	C	O	P	O	L	L	R	J	I	K	M	L	K	I	K	P
F	V	O	C	Z	D	K	C	E	D	K	O	L	J	D	J	F	I
Y	T	T	R	B	G	N	Y	E	K	E	C	V	A	T	E	U	L
T	B	U	J	A	M	A	K	I	N	G	A	F	M	G	H	V	D
Z	U	B	L	A	O	H	L	K	K	J	J	E	A	H	G	W	G
C	S	G	P	S	Q	C	H	M	B	J	F	I	I	N	O	K	B